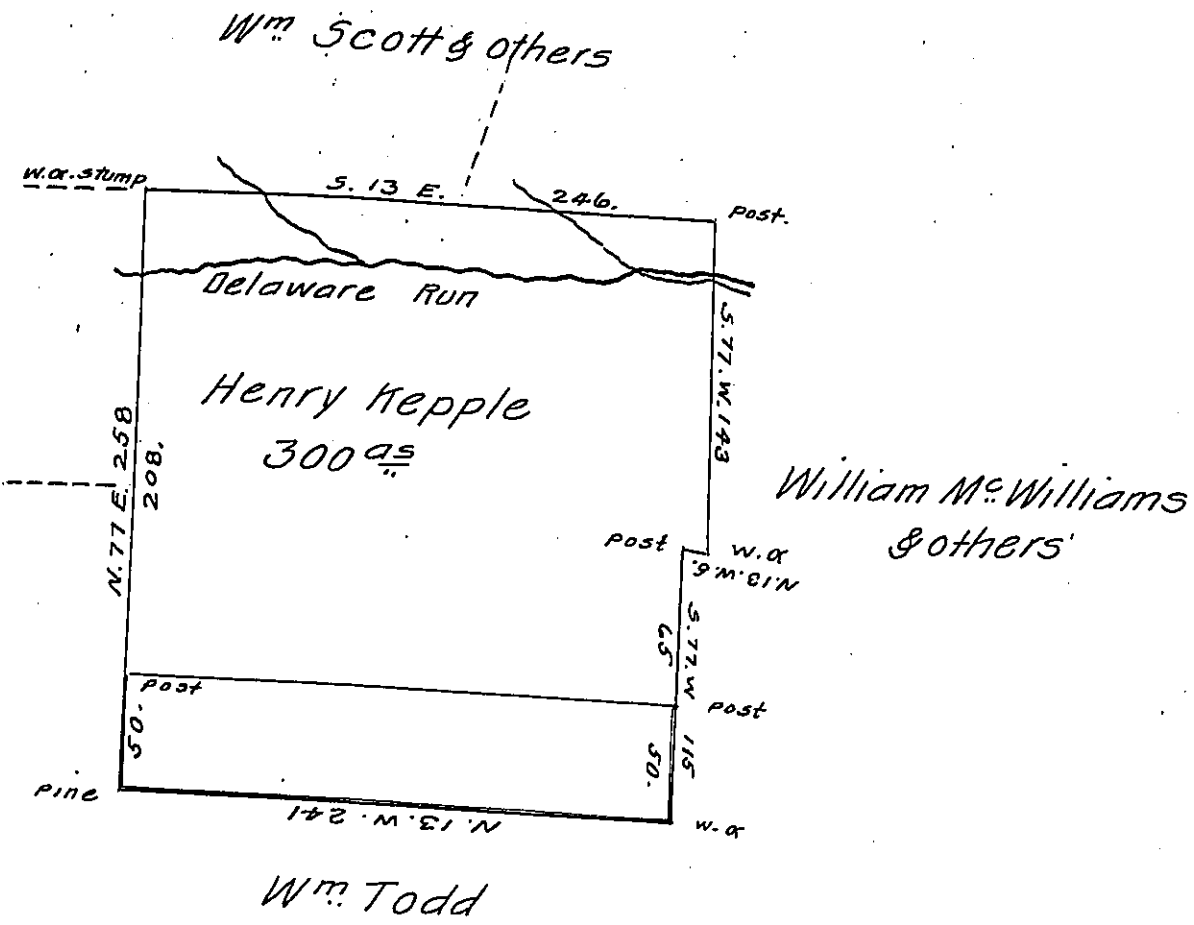


317-94  
Michael Roger



Situate in Turbut Township Northumberland County Joining Michael Roger on Delaware Run. Surveyed on the 19<sup>th</sup> day of September 1835. by Virtue of an Order dated the 3<sup>rd</sup> day of April 1769 N<sup>o</sup> 609. granted to Henry Kepple. Containing Three hundred acres. with the usual allowance of Six Per Cent &c.

Note. The Same tract of land interferes with and is included in a large Survey Made the — day of September 1770. and Resurveyed on the 12<sup>th</sup> Nov. 1809. for Michael Garber or Lemon & Troy in pursuance of their Order dated the 3<sup>rd</sup> day of April 1769 N<sup>o</sup> 2427. And is now owned and Occupied by Welch Nicely & others. in right of Michael Garber or Lemon & Troy. The red lines shows the interference. P.S. this Survey could not be so located as to adjoin Michael Roger & include the Delaware Run & Join the West Branch of Susquehanna. It is located on the ground for which it was intended.

To John Taylor Esq<sup>r</sup>.  
Surveyor General

James F. Murray -

IN TESTIMONY that the above is a copy of the original remaining on file in the Department of Internal Affairs of Pennsylvania, made conformably to an Act of Assembly approved the 16th day of February, 1833, I have hereunto set my Hand and caused the Seal of said Department to be affixed at Harrisburg, this Sixth day of August 1908.

*Henry Howard*  
Secretary of Internal Affairs.